

PENKO Engineering B.V.

Your Partner for Fully Engineered Factory Solutions



How to...
Backup or restore a FLEX 2100, FLEX or
FLEX 2ch. – 4ch.



PENKO

an ETC Company

Table of Contents

Backup	3
Restore	5

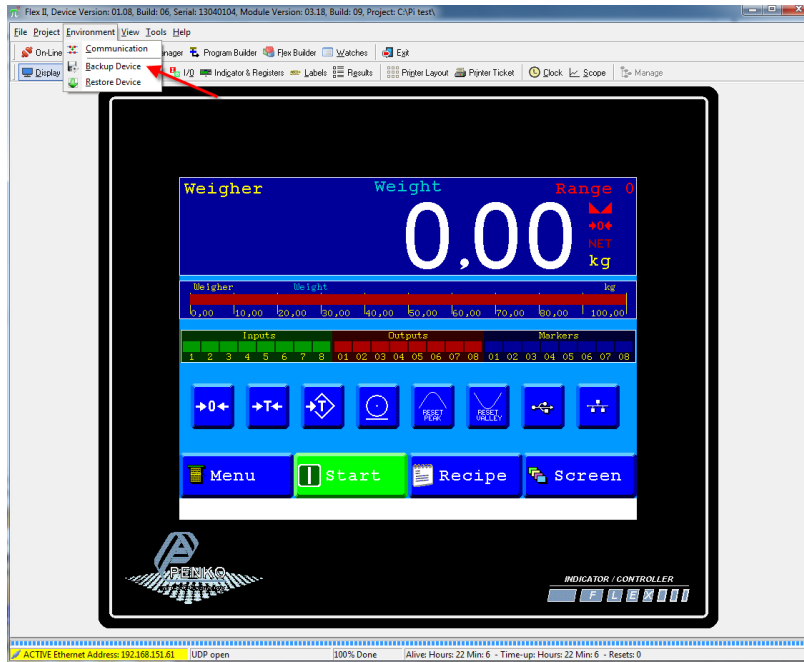
PENKO How to...

Backup or restore a FLEX 2100, FLEX or FLEX 2ch. – 4ch.

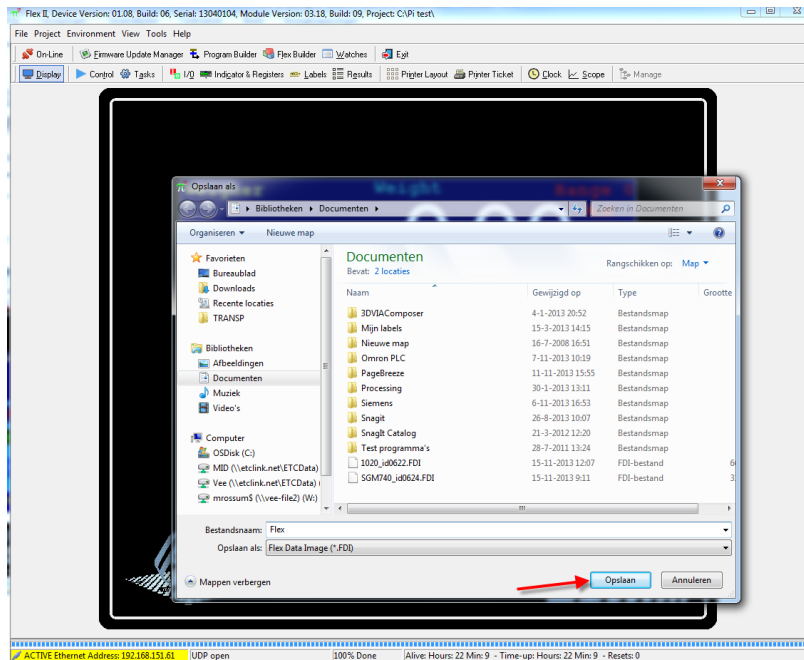
Backup

This will back up all your parameter settings, calibration points, Programs, Recipes and Visualization.

Connect the FLEX to a PC using a Ethernet or USB-cable and open Pi Mach II. Click on **Environment** and click on **Backup Device**.



Select the folder you want to save the backup file and click **Save**.

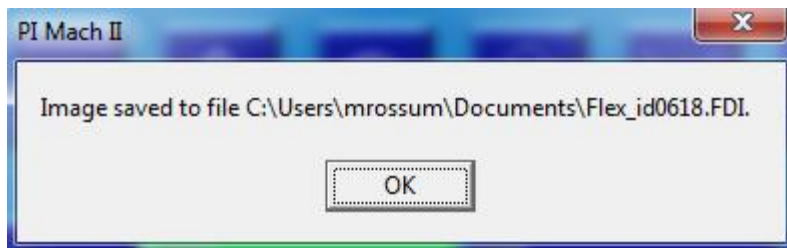
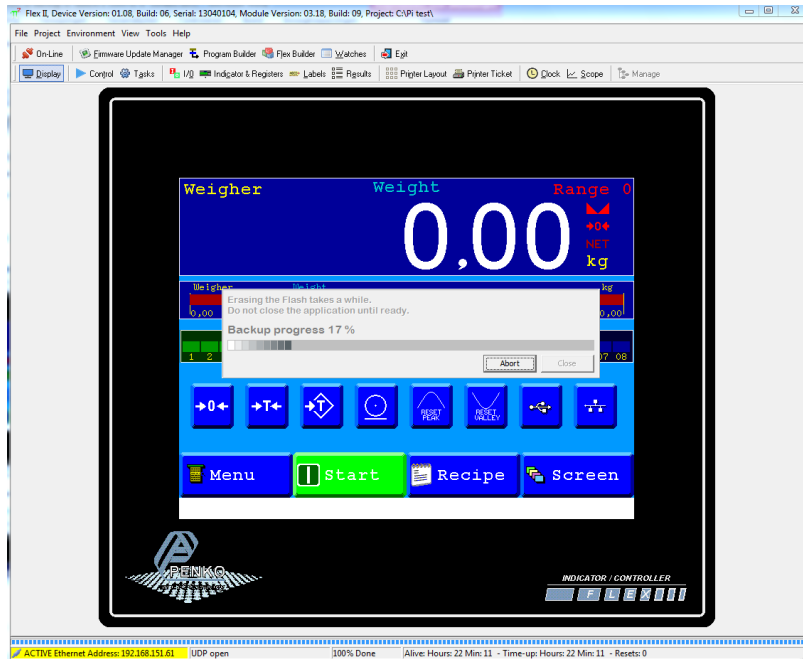


The backup will begin.



PENKO How to...

Backup or restore a FLEX 2100, FLEX or FLEX 2ch. – 4ch.



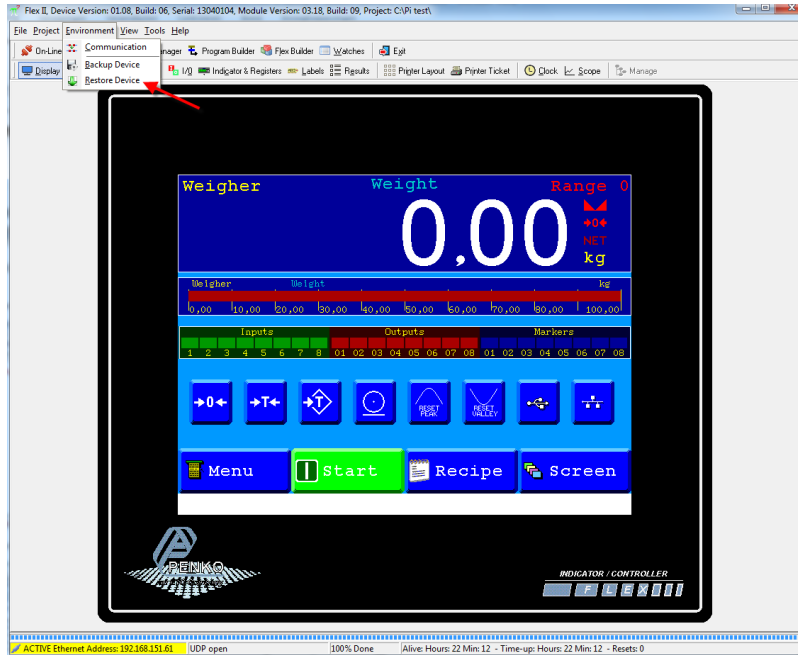
PENKO How to...

Backup or restore a FLEX 2100, FLEX or FLEX 2ch. – 4ch.

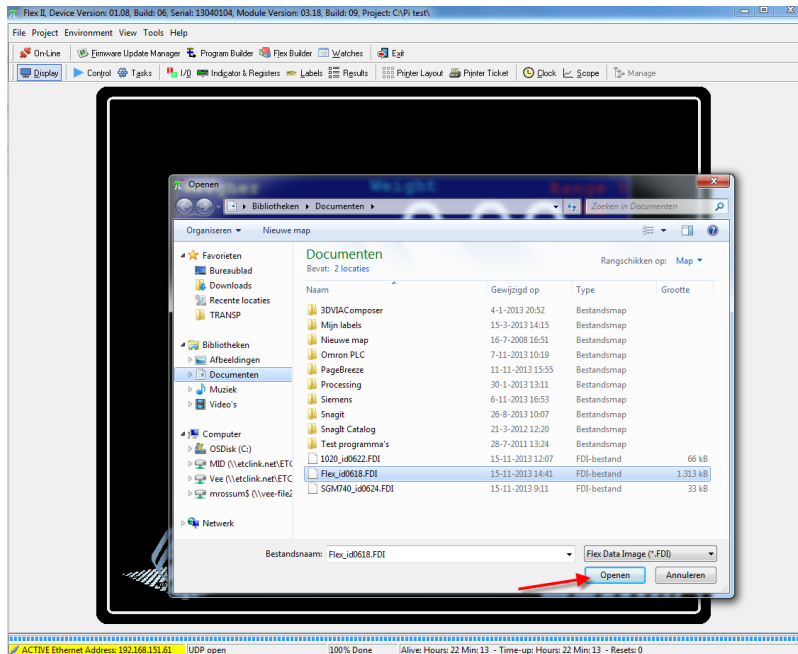
Restore

This will load all your parameter settings, calibration points, Programs, Recipes and Visualisation.

Click on **Environment** and click on **Restore Device**.

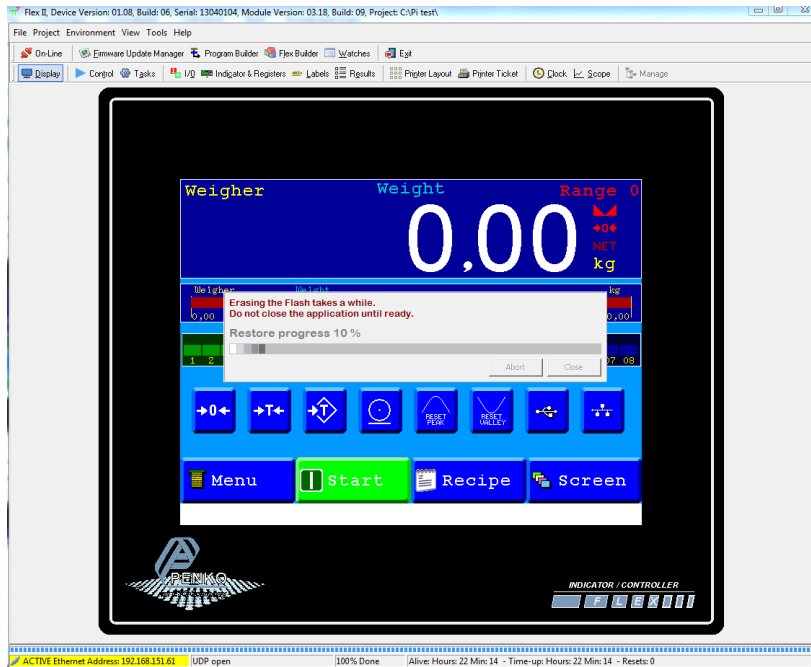


Open the folder where you have your back up file (.FDI file) and click on **Open**.



PENKO How to... Backup or restore a FLEX 2100, FLEX or FLEX 2ch. – 4ch.

The restoring will now begin.



The FLEX will reboot and is now restored.



About PENKO

Our design expertise include systems for manufacturing plants, bulk weighing, check weighing, force measuring and process control. For over 35 years, PENKO Engineering B.V. has been at the forefront of development and production of high-accuracy, high-speed weighing systems and our solutions continue to help cut costs, increase ROI and drive profits for some of the largest global brands, such as Cargill, Sara Lee, Heinz, Kraft Foods and Unilever to name but a few.

Whether you are looking for a simple stand-alone weighing system or a high-speed weighing and dosing controller for a complex automated production line, PENKO has a comprehensive range of standard solutions you can rely on.

Certifications

PENKO sets high standards for its products and product performance which are tested, certified and approved by independent expert and government organizations to ensure they meet – and even – exceed metrology industry guidelines. A library of testing certificates is available for reference on:

http://penko.com/nl/publications_certificates.html



PENKO Professional Services

PENKO is committed to ensuring every system is installed, tested, programmed, commissioned and operational to client specifications. Our engineers, at our weighing center in Ede, Netherlands, as well as our distributors around the world, strive to solve most weighing-system issues within the same day. On a monthly basis PENKO offers free training classes to anyone interested in exploring modern, high-speed weighing instruments and solutions. A schedule of training sessions is found on: www.penko.com/training

PENKO Alliances

PENKO's worldwide network: Australia, Belgium, Brazil, China, Denmark, Germany, Egypt, Finland, France, India, Italy, Netherlands, Norway, Poland, Portugal, Slovakia, Spain, Syria, Turkey, United Kingdom, South Africa, Slovakia Sweden, Switzerland and Singapore. A complete overview you will find on: www.penko.com/dealers

